

## BESTELLANGABEN ORDERING CODE

MG 2 540 03 2 1

**PRODUKT SERIE**  
**PRODUCT SERIES**

**TYPEN BEZEICHNUNG**  
**TYPE**

- 510 (MG AIR 2010K)
- 515 (MG AIR 2015K)
- 520 (MG AIR 2020K)
- 524 (MG AIR 2024K)
- 530 (MG AIR 2030K)
- 540 (MG AIR 2040K)
- 550 (MG AIR 2050K)

**VENTILATOR MOTOR TYPR**  
**FAN MOTOR TYP**

- 01 AC 230V 50Hz
- 03 AC 230V-400V 50Hz
- 04 AC 230V-400V 50-60Hz (B14)
- 12 DC 12V
- 24 DC24V
- 56 Vorber. f. Hydraulikmotor Gr.2, Prep. for hydr. mot. gr. 2

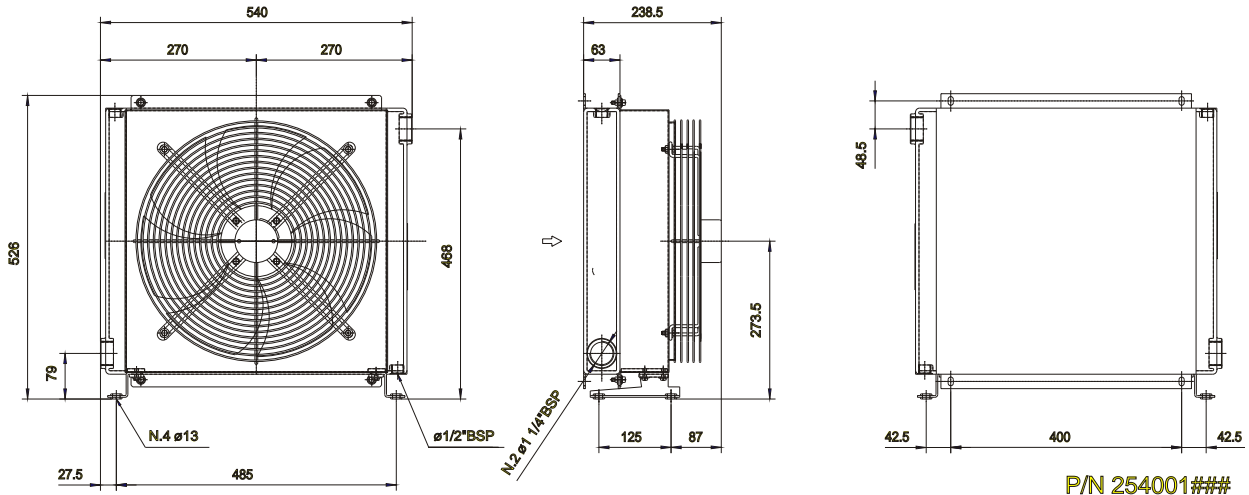
**THERMOSTATE**  
**THERMOSTATS**

- 1 Festes Thermostat fixed thermostat 40-28°C
- 2 Festes Thermostat fixed thermostat 50-38°C
- 3 Festes Thermostat fixed thermostat 60-48°C
- 4 Festes Thermostat fixed thermostat 70-58°C
- 5 Festes Thermostat fixed thermostat 80-68°C
- 6 Festes Thermostat fixed thermostat 90-78°C
- 8 Regelbares Thermostat Adjustable thermostat 0-90°C (Tc2)
- 9 Angeschlossenes regelbares Thermostat connected adjustable thermostat 0-90°C (Tr2)

**VENTILATOR TYP**  
**VENTILATING TYPE**

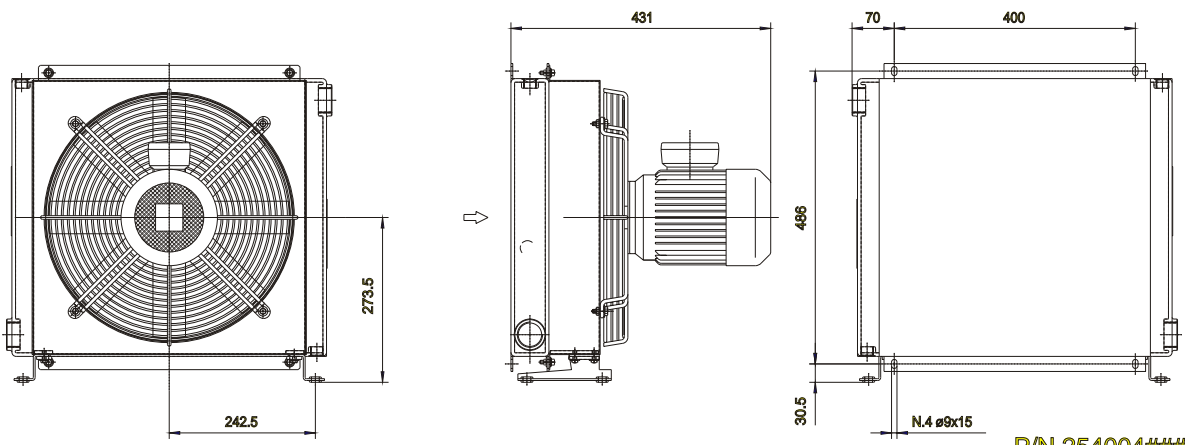
- 01 Luft Ansaugung Suction air flow
- 02 Luft Gebläse Blowing air flow

# Serie K MG2040K

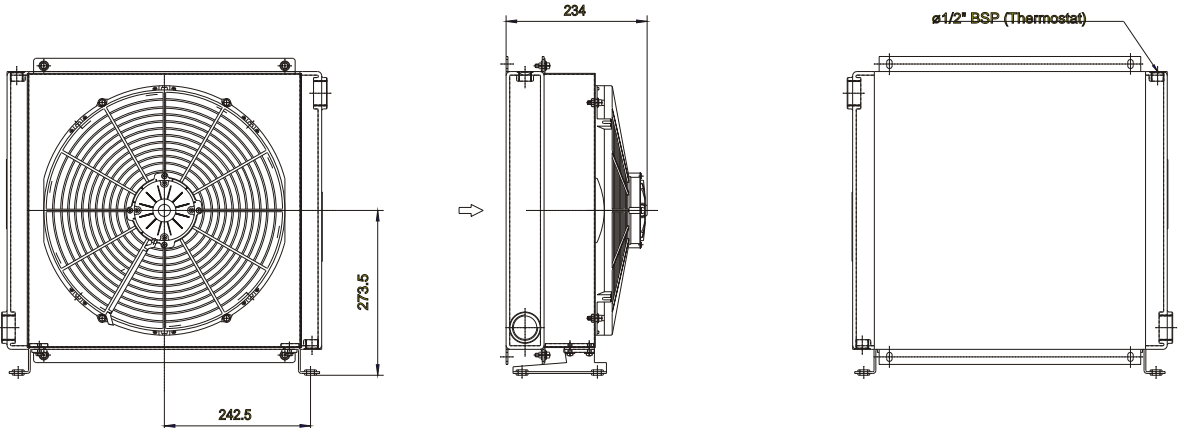


P/N 254001###

P/N 254003###

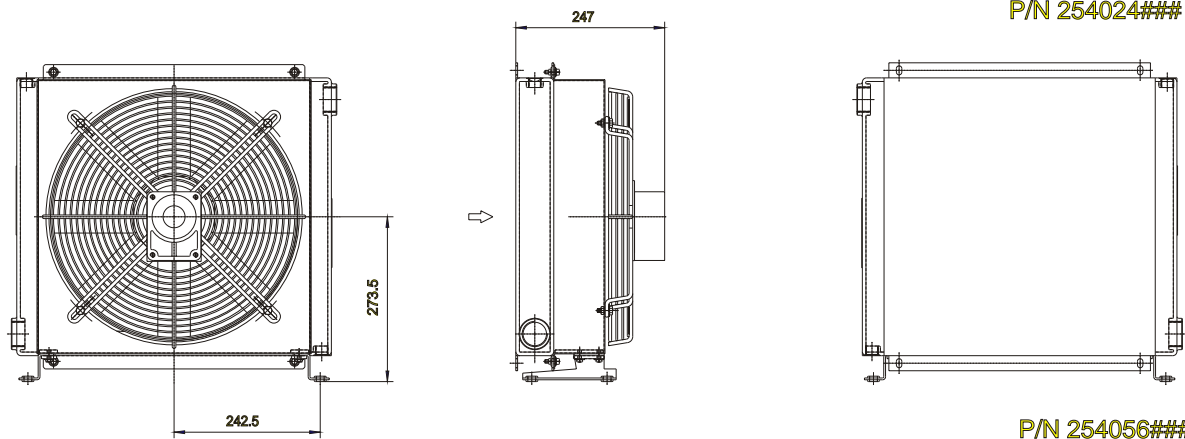


P/N 254004###






P/N 254012###

P/N 254024###



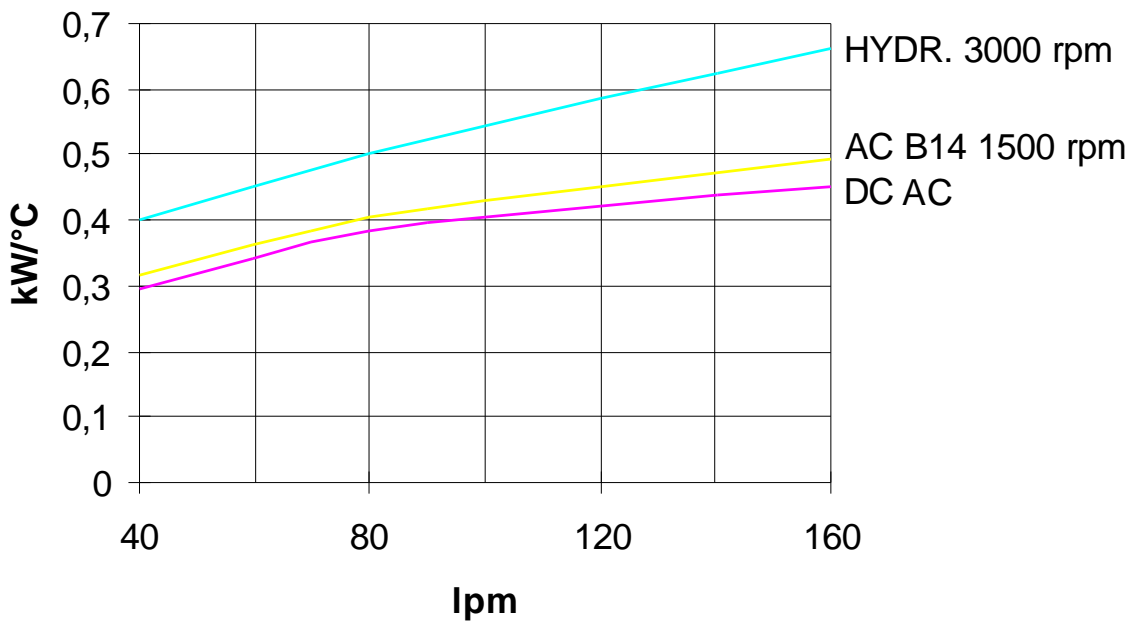
P/N 254056###

Maße und technische Angaben sind nicht bindend.  
Over-all dimensions and technical characteristics are not binding.

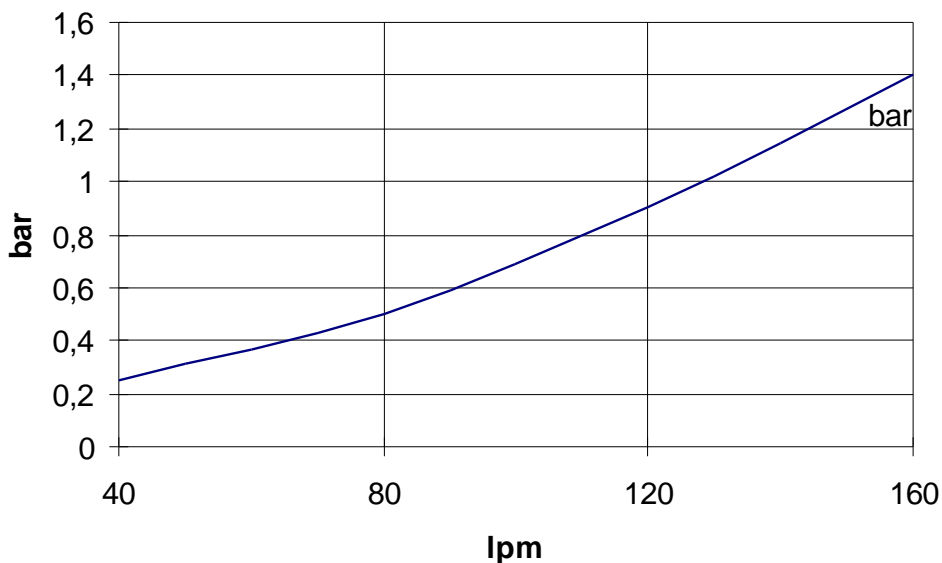
P/N	V	Hz	kW	A	rpm	Fan	dB(A)	(m³/h)	IP	It	kg
254001###	230 AC	50	0,32	1,25	1260	400	71	3200	54	2,7	21
254003###	230-400 AC	50/60	0,27	0,5	1300	400	71	3200	54	2,7	21
254004###	230-400 AC B14	50/60	0,55	1,52	1400	400	77	3740	55	2,7	25
254012###	12 DC	-	0,21	13,8	2500	385	76	3000	65	2,7	20
254024###	24 DC	-	0,21	8,2	2500	385	79	3370	65	2,7	20
254056###	Prepared for Gr. 2 hydraulic Motor					400			-	2,7	19

 Kontakt NHD     Contact NHD

## Leistungsdiagramm    Performance diagram



## Druckverlust    Pressure drop (ISO VG32)



### Korrekturfaktor -F- (Druckverlust)    Correction factor -F- (Pressure drop)

cest	10	15	20	30	40	50	60	80	100	200	300
F	0,5	0,65	0,77	1	1,2	1,4	1,6	1,9	2,1	3,3	4,3