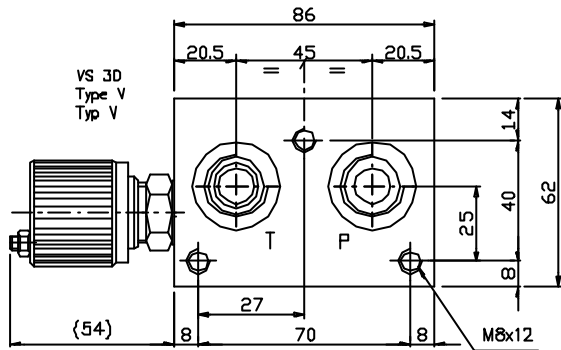


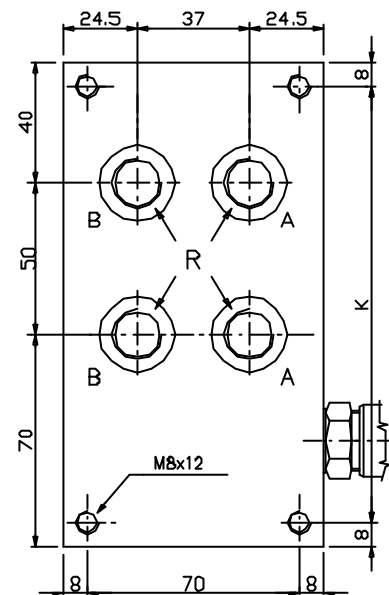
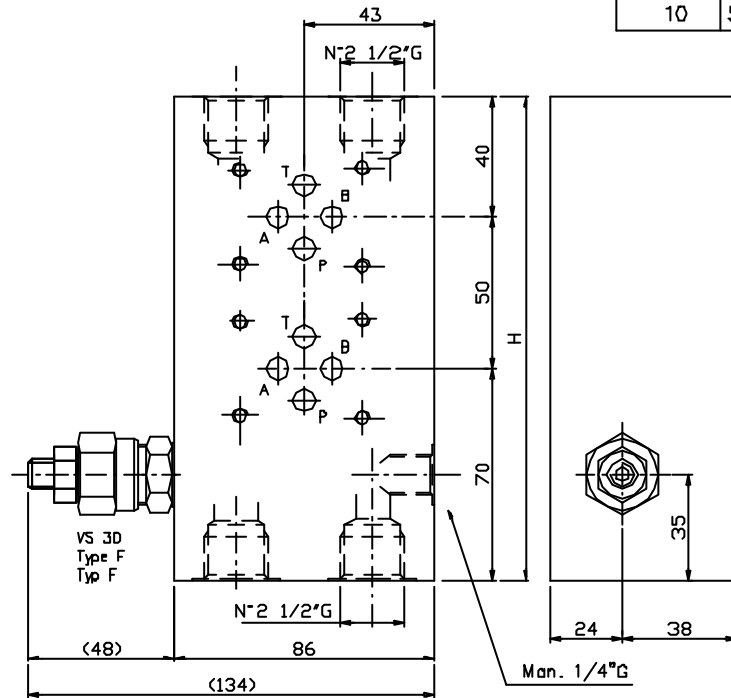
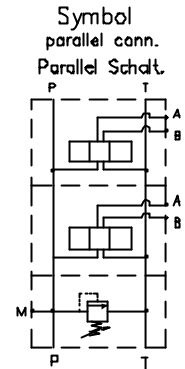


Monoblock with rear parts A-B = 3/8"G or 1/2"G, P-T = 1/2"G
Parallel connection. With/without relief valve. (RV)

Monoblock mit rueckseitige Anschl 3/8"G oder 1/2"G, P-T = 1/2"G
Parallel Schaltung. Mit/ohne Druckbegrenzungsventil. (DBV)

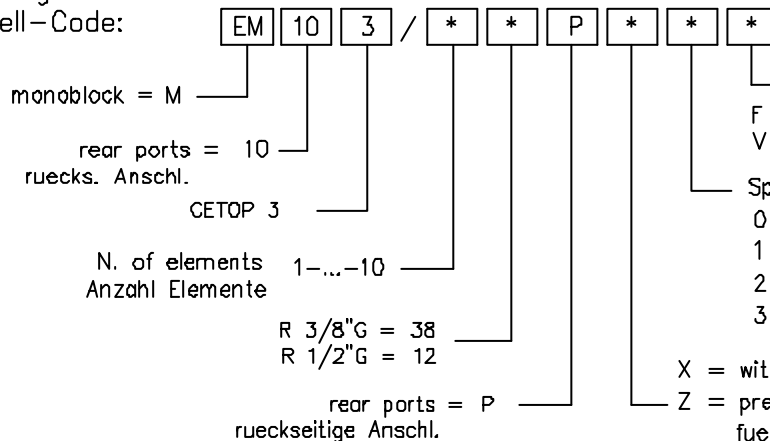


N° Elem.	H	K	(Kg)
1	110	94	3
2	160	144	4.4
3	210	194	5.8
4	260	244	7.2
5	310	294	8.6
6	360	344	10
7	410	394	11.4
8	460	444	12.8
9	510	494	14.2
10	560	544	15.6



Ordering code

Bestell-Code:



Setting / Einstellung
F = by key / Schlussverstellung
V = handwheel / Handrad

Spring type / Feder Type
0 = 5-50 bar
1 = 30-100 bar
2 = 50-210 bar
3 = 100-350 bar

X = with RV / mit DBV

Z = prearranged for RV fuer DBV vorgebohrt

Y = without RV / ohne DBV

NOTES : See page 50 for technical characteristics of RV
BEMERKUNG : Siehe techn. Daten des DBV auf Seite 50