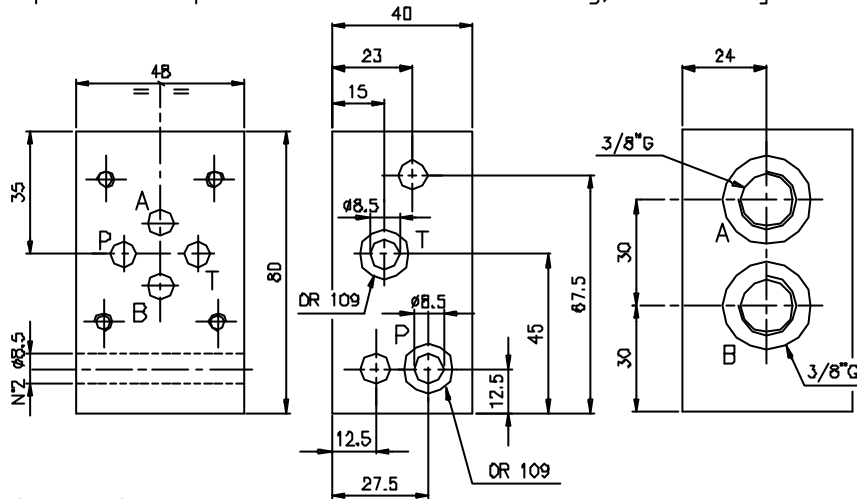
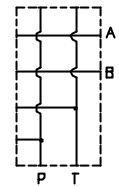


Sandwich plate for parallel or series connection for 2 tie rods. Weight 1 kg  
 Zwischenplatte fuer parallel- oder Serienschaltung, fuer 2 Zuganker. Gewicht 1 Kg

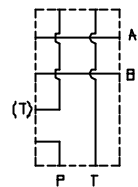


Hydr. symbol  
 Symbol

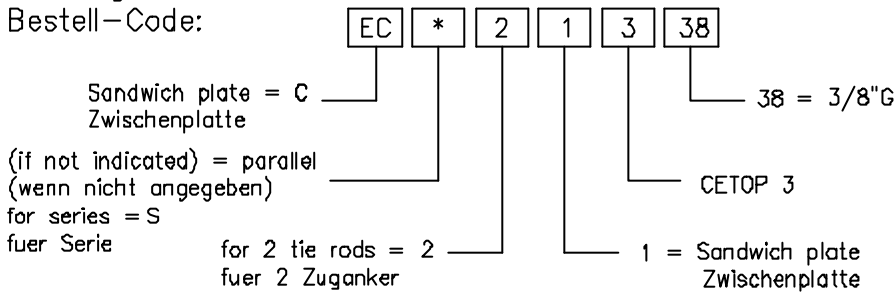
Parallel conn.  
 Parallel schalt.



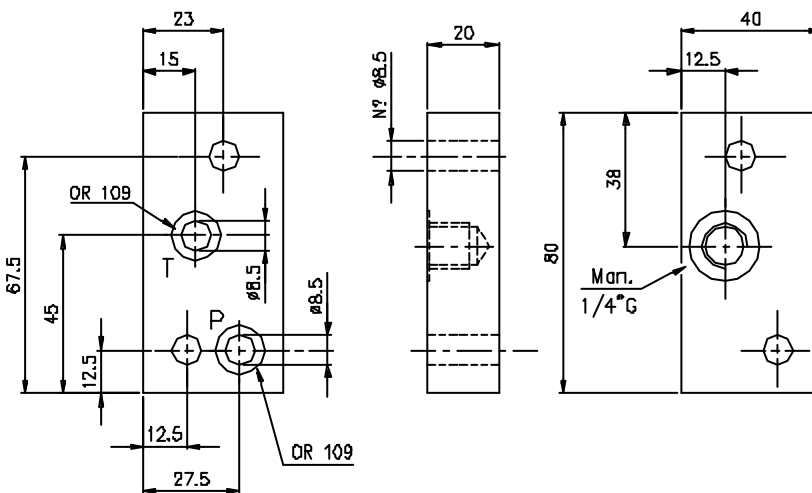
Series conn.  
 Serien schalt.



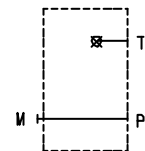
Ordering code:  
 Bestell-Code:



End plate, for 2 tie rods. Weight 0.6 kg  
 Endplatte, fuer 2 Zuganker. Gewicht 0.6 kg



Hydr. symbol  
 Symbol



Ordering code:  
 Bestell-Code:

