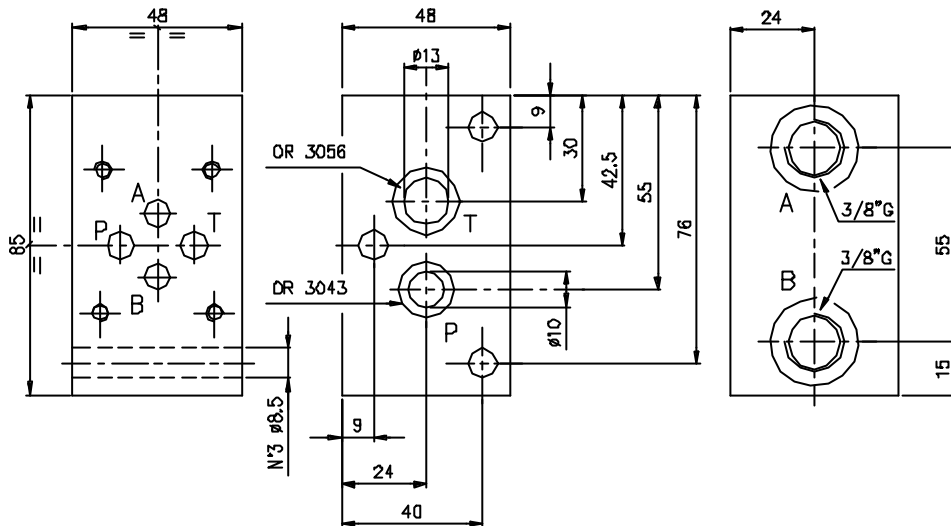


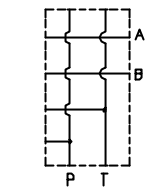


Sandwich plate for parallel or series connection, 3 tie rods. Weight 1.2 kg
 Zwischenplatte fuer Parallel- oder Serienschaltung, fuer 3 Zuganker. Gewicht 1.2 kg

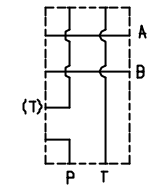


Hydr. symbol
Symbol

Parallel conn.
Parallel schalt.

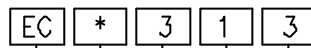


Series conn.
Serien schalt.



Ordering code:

Bestell-Code:



CETOP 3

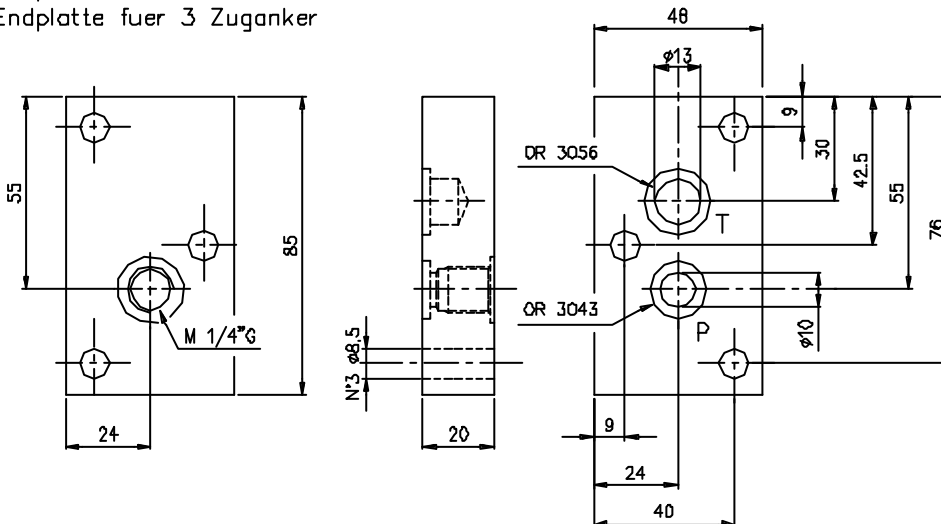
sub plate for packing = C
 Grundplatte fuer Verkettung

(if not indicated) = parallel
 (wenn nicht angegeben)
 for series = S
 fuer Serie

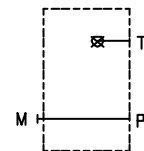
1 = Sandwich plate
 Zwischenplatte

3 = for 3 tie rods
 fuer 3 Zuganker

Endplate for 3 tie rods
 Endplatte fuer 3 Zuganker

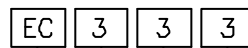


Hydr. symbol
Symbol



Ordering code:

Bestell-Code:



CETOP 3

sub plate for packing = C
 Grundplatte fuer Verkettung

for 3 tie rods = 3
 fuer 3 Zuganker

3 = Endplate
 Endplatte