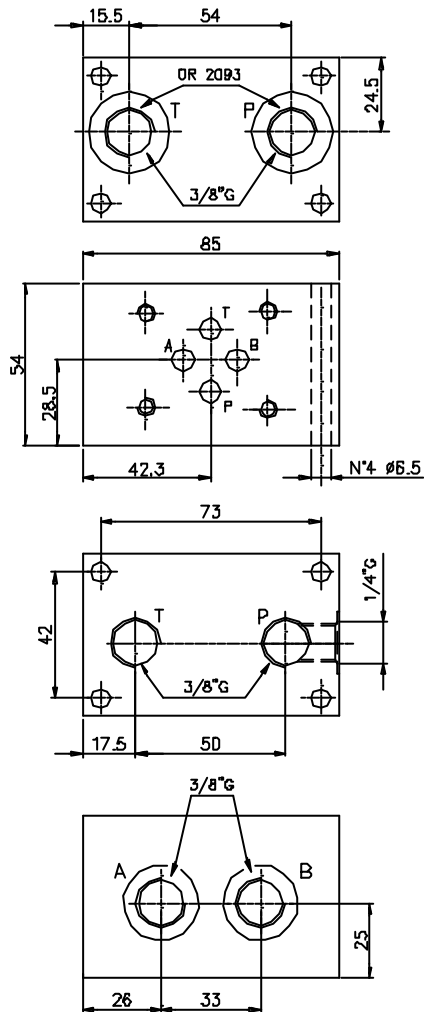




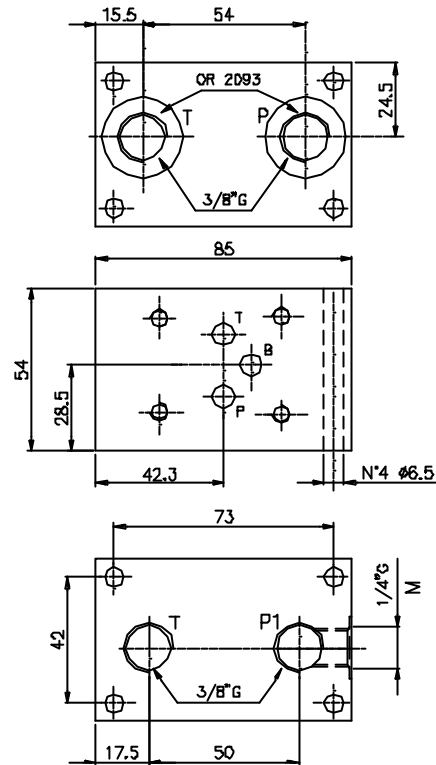
Subplate for packing with A-B
on back = 3/8"G. Weight 1.4 kg

Grundplatte fuer Verkettung mit A-B
rueckseitig= G 3/8". Gewicht 1.4 kg

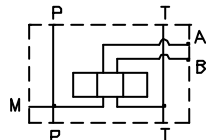


Sub plate for packing, version for
pressure reducing valve. Weight 1.4 kg

Verkettungsplatte für Druckminderventil
Gewicht 1.4 kg



Symbol
TYPE / TYP
P



Ordering code
Bestell-code

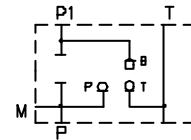
subplate for packing = C
Grundplatte fuer Verkettung

CE TOP 3

4 tie rods = 4
4 Zuganker

EC 3 4 38 *

Symbol
TYPE / TYP
PR



P = rear ports
rueckseitige Anschluesse

PR = version for reducing valve
rueckseitige Anschluesse