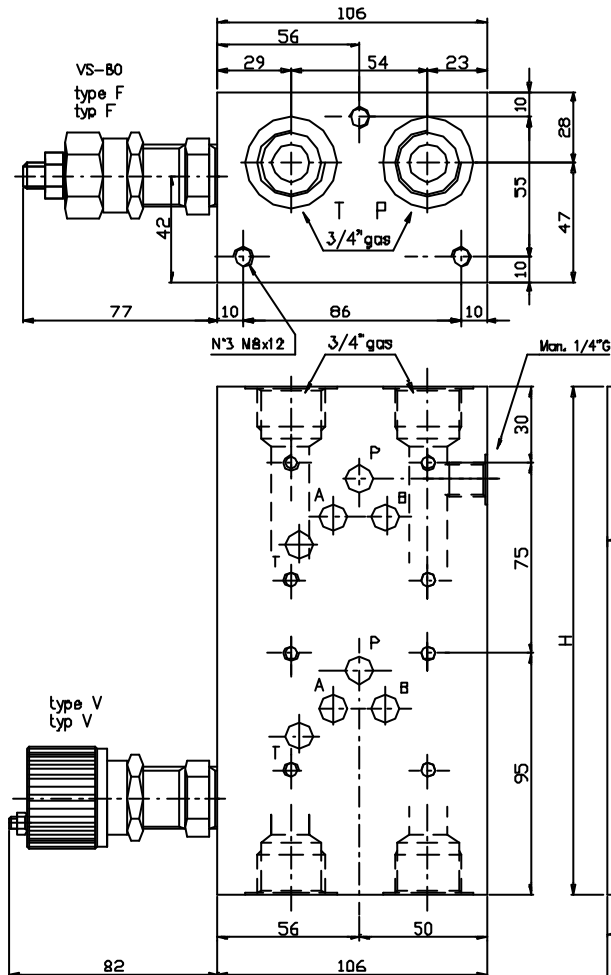


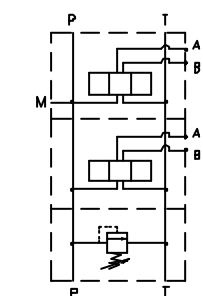


Monoblock with ports A-B on rear = 1/2"G or 3/4"G, P-T = 3/4"G.  
With/without pressure relief valve.(RV)

Monoblock mit rueckseitigen Anschlusse A-B = 1/2"G oder 3/4"G, P-T = 3/4"G.  
Mit/ohne Druckbegrenzungsventil.(DBV)



N° Elem.	H	K	Kg
1	125	105	7
2	200	180	11.5
3	275	255	16
4	350	330	20
5	425	405	24
6	500	480	28



Symbol  
parallel conn.  
Parallel Schalt.

Monoblock = M  
ports A-B on rear = 10  
ruecks. Anchl A-B

Ordering code  
Bestell-Code

EM 10 5 / \* \* \* \* \*

CETOP 5

N. Elem. = 2-3-4-5-6  
Anzahl Elemente

R 3/4"G = 34  
R 1/2"G = 12

Setting/Einstellung

F = by key / Schlussverstellung  
V = Handwheel/Handrad

Spring type/Feder Typ

1 = 5-50 bar  
2 = 35-100 bar  
3 = 80-250 bar

X = with RV / mit DBV

Y = without RV / ohne DBV

Z = prearranged for RV  
fuer DBV vorgebohrt