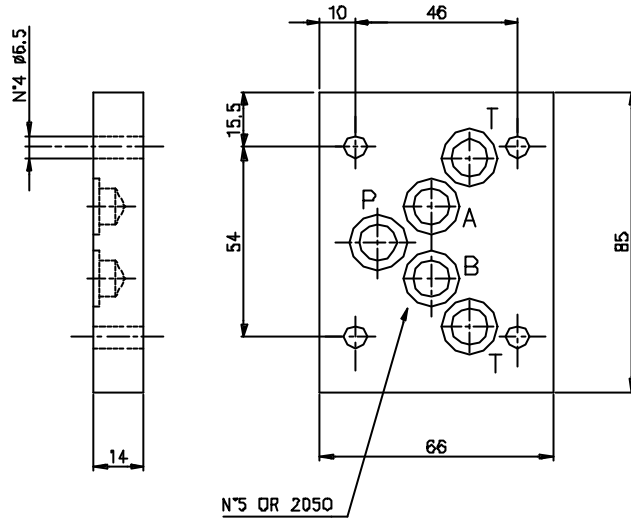
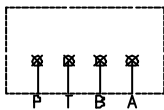


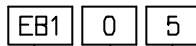


End plate. Weight = 0.5 kg
 Endplatte. Gewicht = 0.5 Kg

Hydr. symbol
 Symbol



Ordering code
 Bestell-Code



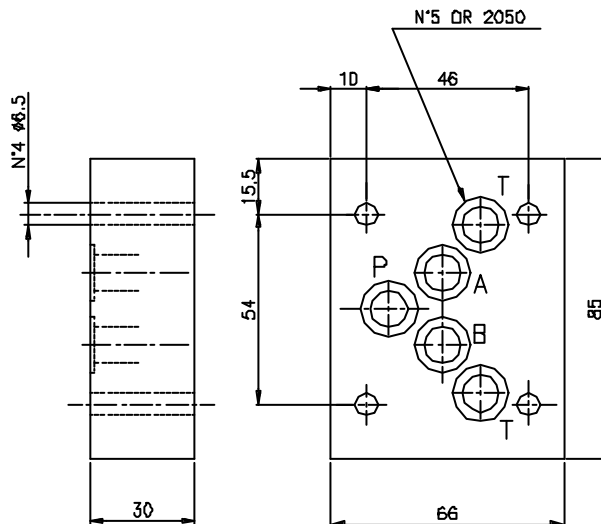
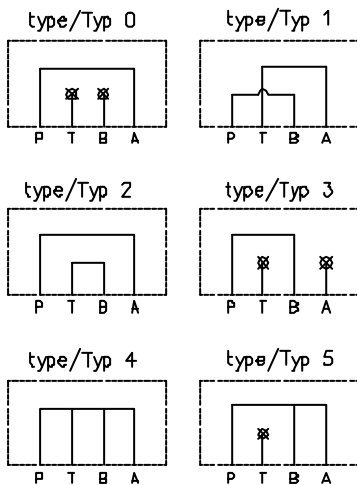
end plate/Endplatte = B1

CETOP 5

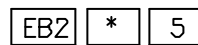
0 = P-T-B-A closed/geschlossen

End plate. Weight = 1.1 kg
 Verkettungsplatte. Gewicht = 1.1 Kg

Hydr. symbol
 Symbol



Ordering code
 Bestell-Code



end plate = B2
 Verkettungsplatte

CETOP 5

0 - 1 - 2 - 3 - 4
 see symbol / sehe Symbol