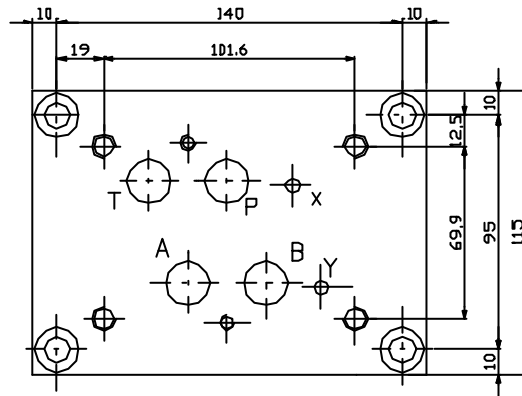
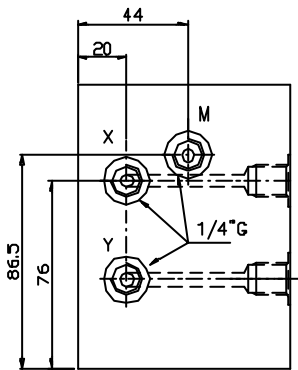
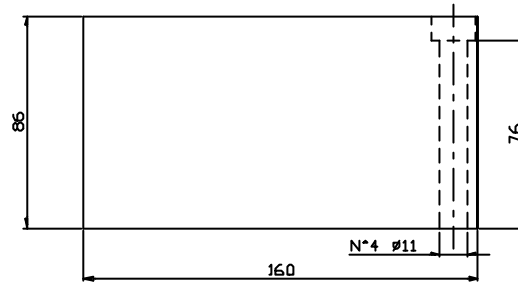
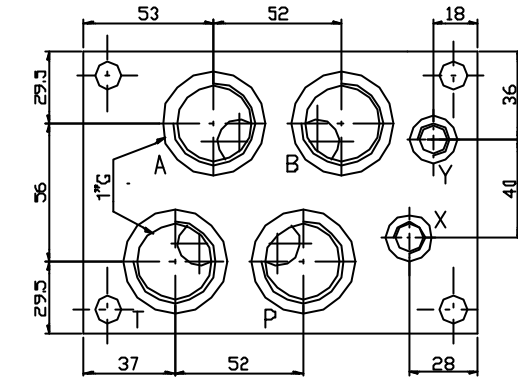
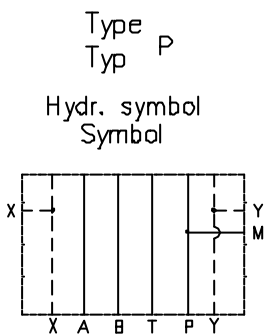




Subplate with A-B-P-T on rear = 1" G  
 Weight = 10 Kg  
 Grundplatte, A-B-P-T ruckseitig = 1" G  
 Gewicht = 10 Kg



Ordering code  
 Bestell-Code

ES 7 10 P

subplate = S  
 Grundplatte

CETOP 7

1" G = 10

P = A - B - P - T on rear / ruckseitig