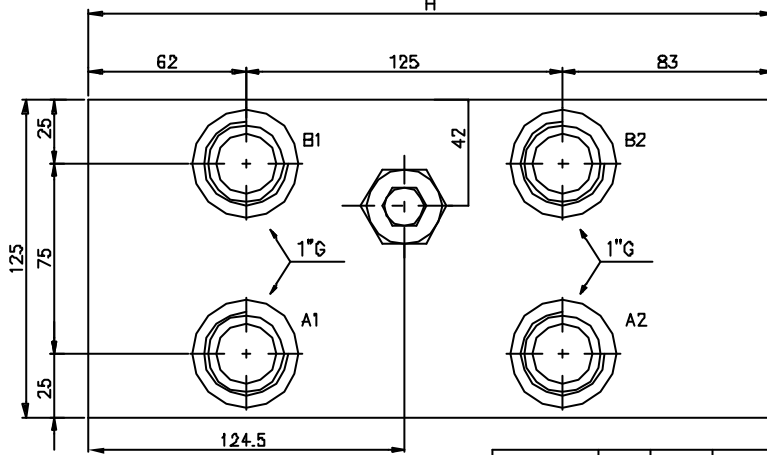
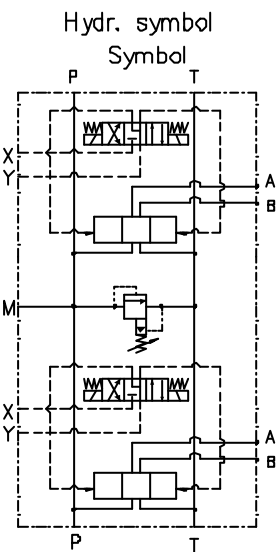
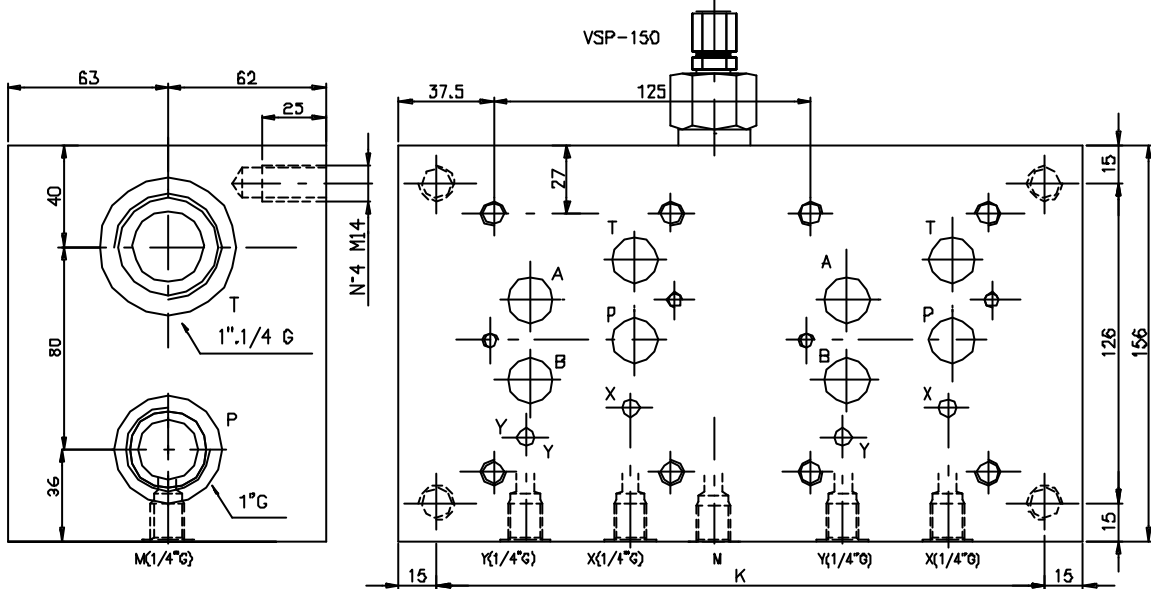




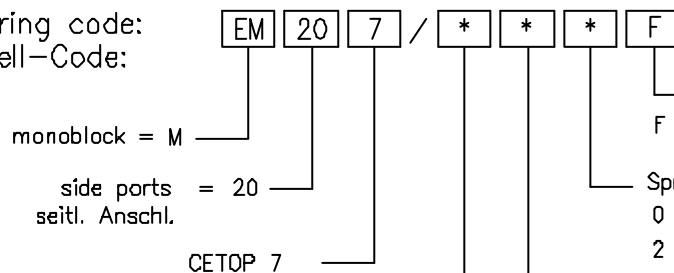
Monoblock with side ports A-B = 1" G, P = 1" G, and T = 1" 1/4 G  
Parallel connection. With/without relief valve.(RV)

Monoblock mit seitlichen Anschlüssen A-B = 1" G, P = 1" G und T = 1" 1/4 G  
Parallel Schaltung. Mit/ohne Druckbegrenzungsventil.(DBV)



N. Elem.	H	K	Kg
2	270	240	35
3	395	365	53
4	520	490	71

Ordering code:  
Bestell-Code:



monoblock = M  
side ports = 20  
seitl. Anschl.

CETOP 7

N° of elements /Anzahl Elemente 2-3-4

Setting / Einstellung  
F = by key / Schlussverstellung

Spring type / Feder Type  
0 = 1.7-70 bar  
2 = 10-210 bar  
3 = 35-420 bar

X = with RV / mit DBV

Z = prearranged for RV  
fuer DBV vorgebohrt

Y = without RV / ohne DBV

NOTES : See page 52 for technical characteristics of RV  
BEMERKUNG : Siehe techn. Daten des DBV auf Seite 52