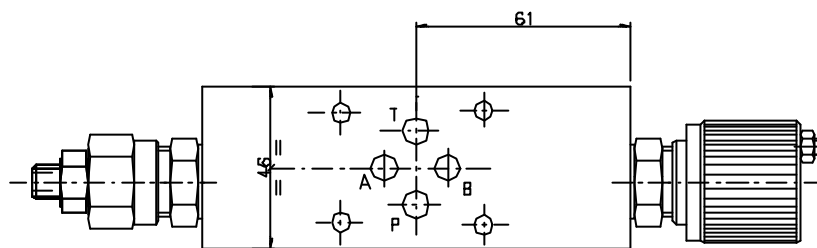
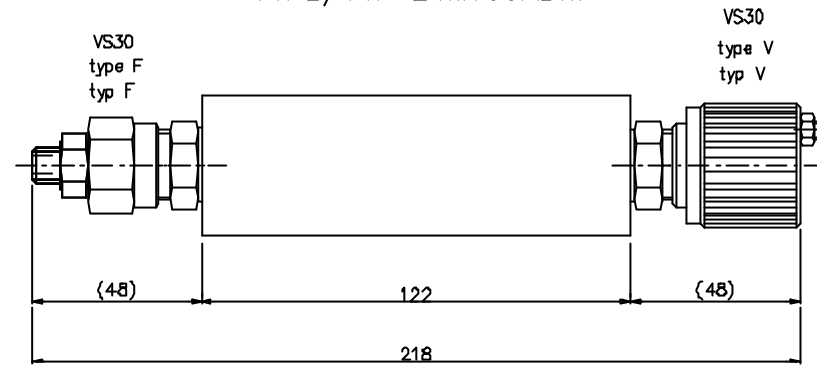
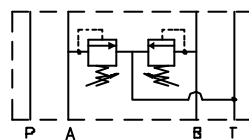


Direct acting pressure relief valve (RV) for modular mounting  
 Druckbegrenzungsventil Direktgesteuert (DBV) fuer Modularmontage

TYPE/TYP EVM103AB...

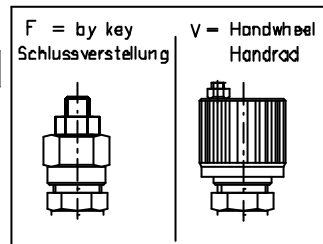


setting/einstellung AB



Ordering code  
 Bestell-Code

NHD — E — V — M — 10 — 3 — AB — \* — \* — \*  
 Valve / Ventil = V  
 modular mounting / Modularmontage = M  
 version of discharge in T = 10  
 version mit Ablauf in T  
 CETOP 3  
 setting on /einstellung = AB  
 with RV / mit DBV = X  
 prearranged for RV = Z  
 fuer DBV vorgebohrt



Setting type/ Einstellung Typ

spring type/ Feder Typ

N.	range/Bereich min-max ( bar )
0	5-50
1	30-100
2	50-210
3	100-350

For technical features of VS-30 valve see page 50  
 Technische Eigenarten des VS-30 Ventils : Seite 50