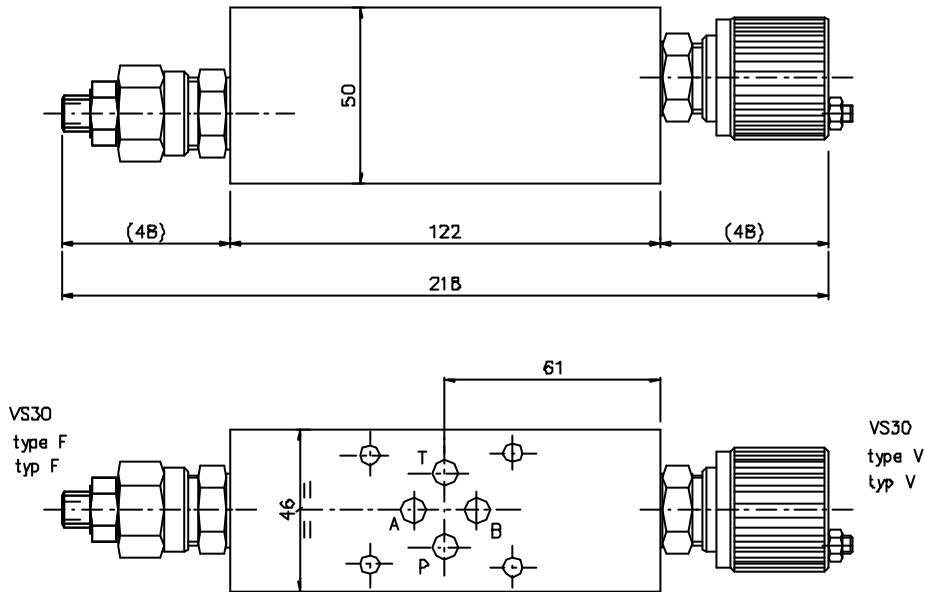


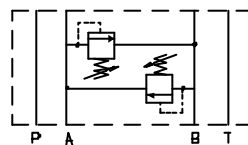


Direct acting pressure relief (RV) valve for modular mounting
 Druckbegrenzungsventil Direktgesteuert (DBV) fuer Modularmontage

TYPE/TYP EVM203AB...



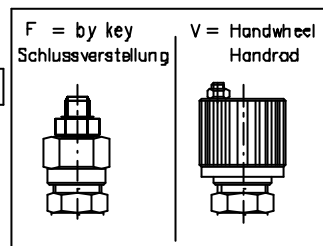
setting/einstellung AB



Ordering code
 Bestell-Code

NHD	E	V	M	20	3	AB	*	*	*
-----	---	---	---	----	---	----	---	---	---

Valve / Ventil = V
 modular mounting / modularmontage = M
 version of crossed discharge / Version mit gekreuztem Ablauf = 20
 CETOP 3
 setting on /einstellung = AB
 with RV / mit DBV = X
 prearranged for RV / fuer DBV vorgebohrt = Z



Setting type/ Einstellung Typ

spring type/ Feder Typ

N.	range/Bereich min-max (bar)
0	5-50
1	30-100
2	50-210
3	100-350

For technical features of VS-30 valve see page 50
 Technische Eigenarten des VS-30 Ventils : Seite 50