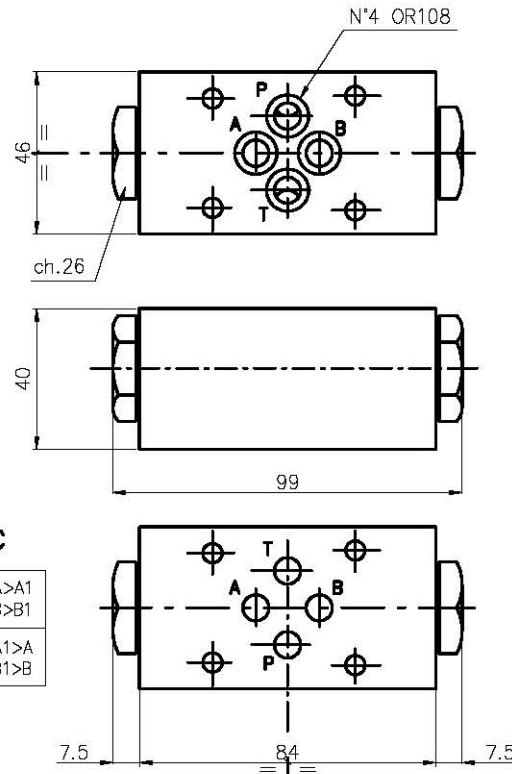
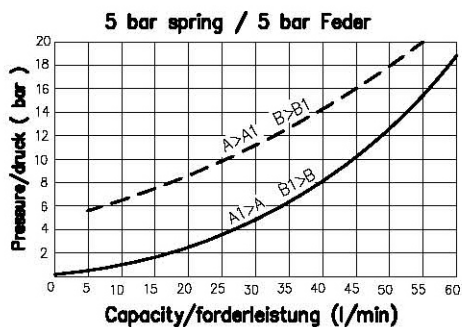
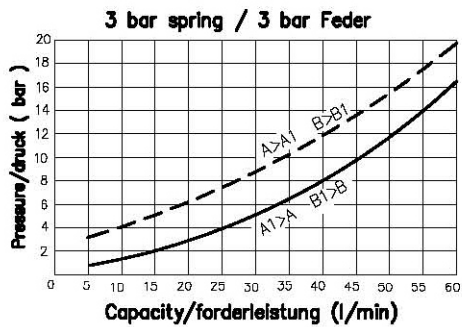
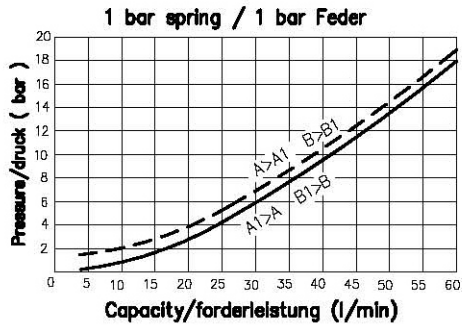


Pilot operated check valves for modular mounting
Einzel und Doppel-Entsperrbare Rueckschlagventile fuer Modularmontage
Weight / Gewicht = 1.2 Kg

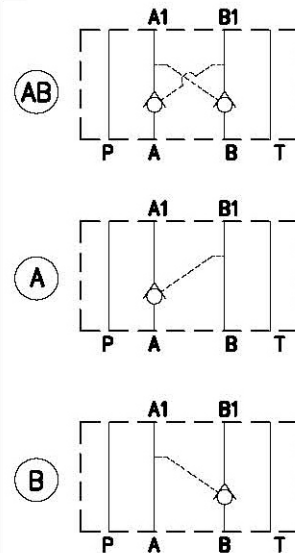


T=50°C

---	A>A1 B>B1
—	A1>A B1>B

Max pressure / Druck
300 bar
Pilot ratio
Steuerungsverhältnis
1 : 3

Hydr. symbol
Symbol



Ordering code

Bestell-Code

E R M 10 3 * *

NHD = E

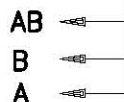
Check valve
Rueckschlagventil = R

type of Modular mounting =
typ fuer Modularmontage = M

standard version = 10

CETOP 3 = 3

checking of/Einstellung :



N.	spring type Feder Typ
1	1 bar
3	3 bar
5	5 bar