

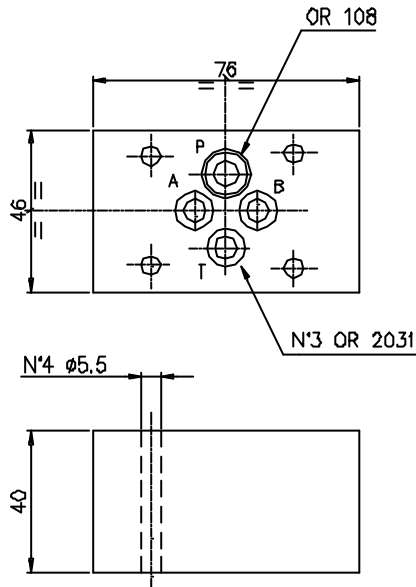


Direct operated check valves for modular mounting

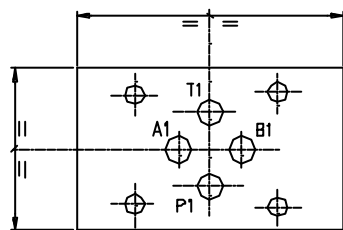
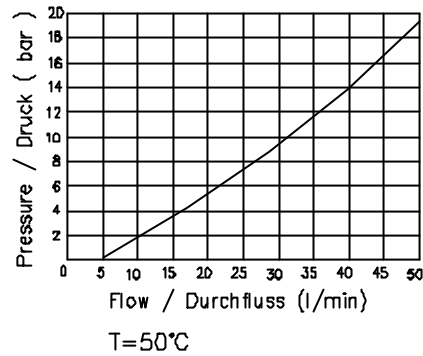
Einfache Rueckschlagventil fuer Modularmontage

Weight / Gewicht = 0.9 Kg

Type/Typ ERM203P



Max pressure  
Druck  
300 bar



Ordering code  
Bestell-Code

E R M 20 3 \*

NHD =

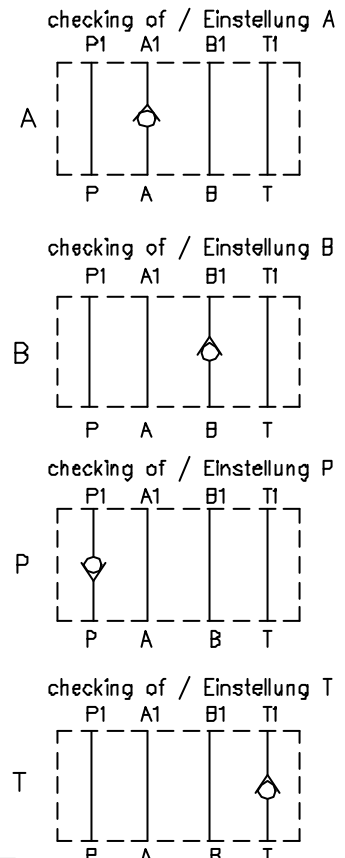
Check valve = R  
Rueckschlagventil

type of Modular mounting = M  
Typ fuer Modularmontage

Direct operated = 20  
Einfache Rueckschlagventil

CETOP 3 = 3

checking of/Einstellung :



NOTES : Negligible leakage  
BEMERKUNG : Belangloser Ölverlust