

Modular pressure selector valve – CETOP 3

LS side port 1/4"G.

Wechselventil – Modularbauweise CETOP 3.

LS Verbraucher seitlich 1/4"G.

TECHNICAL SPECIFICATIONS

Max flow ports/ max Durchfluss

Max flow internal selector / max Durchfluss der internen Patrone

Max pressure / max Betriebsdruck:

Oil viscosity / Öviskosität:

Oil temperature / Öltemperatur:

Oil type / Öl Typ:

Filtering / Ölfilterung:

Gaskets / Dichtung:

Body material / Werkstoff:

Weight / Gewicht:

TECHNISCHE DATEN

— 40 l/min.

— 6 l/min

— 300 bar

— 2,8–380 cSt

— -10° +80°

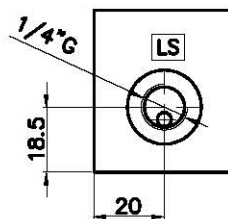
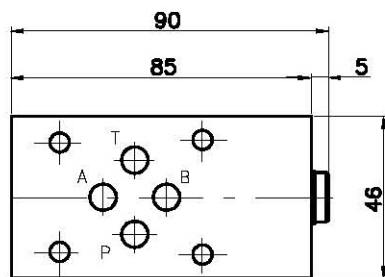
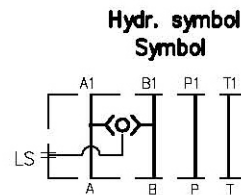
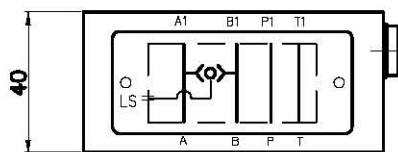
— mineral HL-HLP DIN 51524

— 19/15 ISO 4466 (25micron)

— NBR + PTFE

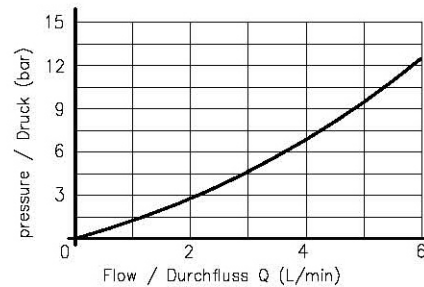
— GG25

— 1.0 Kg



Pressure drop of the internal selector cartridge

Druckabfall der internen Wahlpatrone



Ordering code
Bestell-Code

