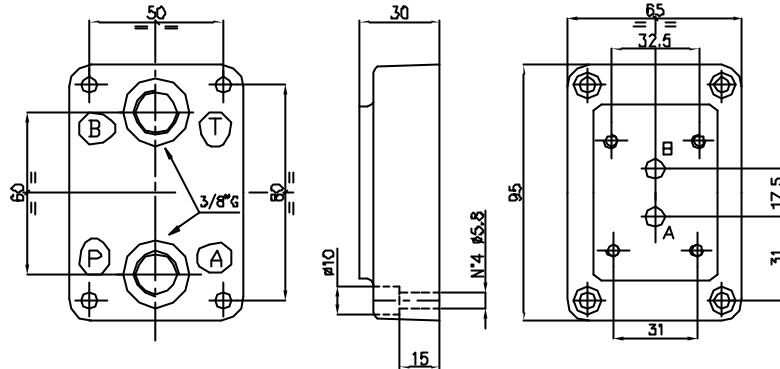
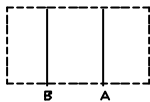




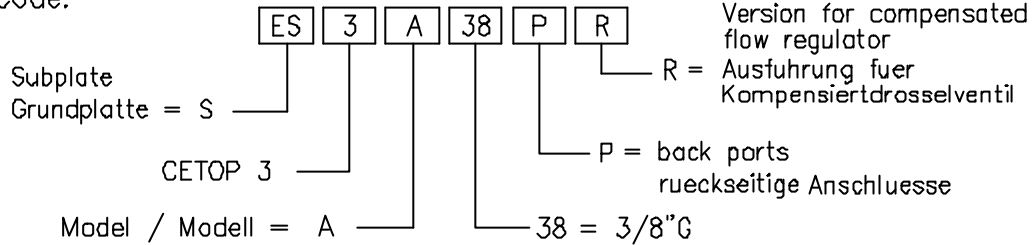
Subplate for compensated flow regulator, with ports A-B = 3/8" G on rear.  
 Grundplatte fuer Kompensiertdrosselventil, mit Anschluesen A-B = 3/8" G rueckseitig.

Weight / Gewicht = 1 kg

Hydr. symbol  
Symbol



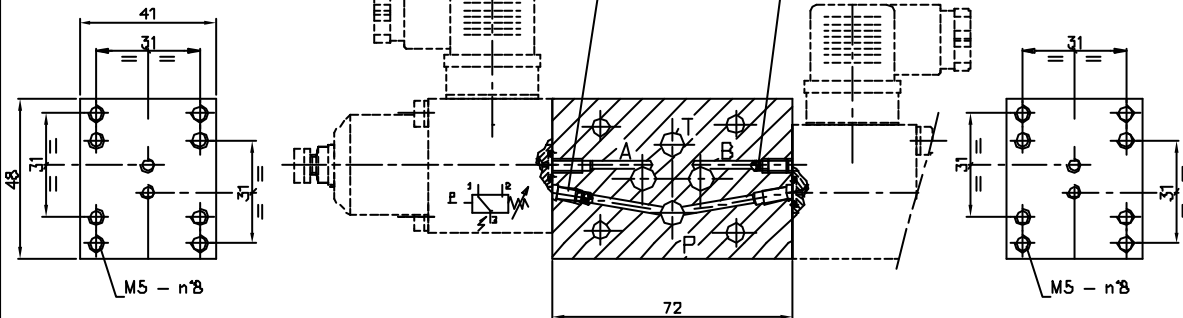
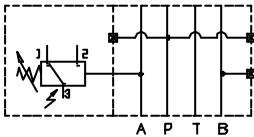
Ordering code:  
Bestell-Code:



Packing plate CETOP3 for pressure switch type EB6113  
 Verbindungsplatte CETOP 3 für Druckschalter typ EB6113

Weight= 1 Kg  
Gewicht= 1 Kg

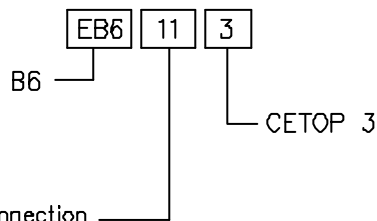
Hydraulic symbol  
Symbol



Ordering code  
Bestell-Code

Module for use  
with pressure switches  
Verbindungsplatte  
mit Druckschalter

Multiple connection  
Anschluss mehrfach



NOTE: The plate is equipped of the following commercial parts:

- N° 4 O-Rings 108 - 70 Sh
- N° 3 Restrictor UNI 5925 - M4 x 8
- N° 3 Balls ø3

NOTE: Die platte ist mit folgenden Handelselementen versehen:

- N° 4 O-Rings 108 - 70 Sh
- N° 3 Düsen UNI 5925 - M4 x 8
- N° 3 Kugeln ø3